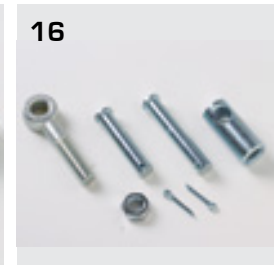


# BUTLER MANHOLE

## & SPARE PARTS

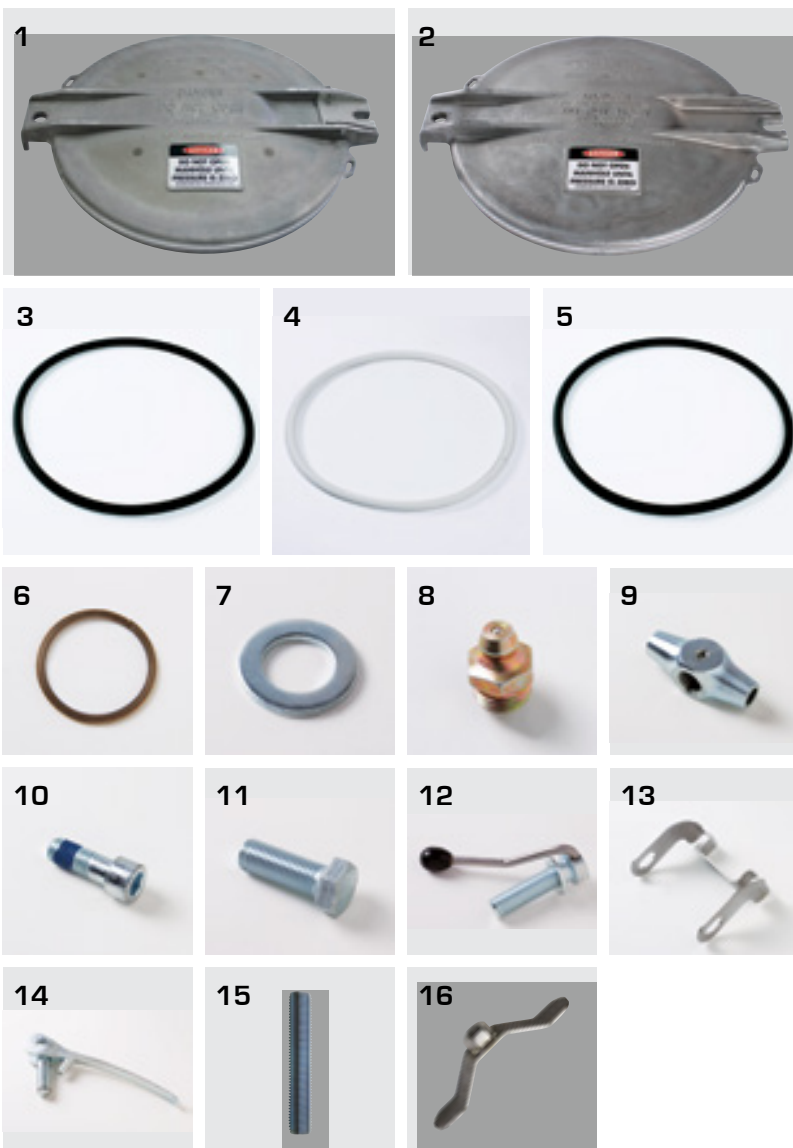
| ITEM                                   | PART #   |
|--|----------|
| 1 Butler Manhole, Complete Assembly    | 901557   |
| 2 Butler Manhole Cover                 | 901556   |
| 3 Butler Manhole Cover Blank, Aluminum | C-901559 |
| 4 Gasket, Black                        | A-901603 |
| 5 Gasket, White                        | 070099   |
| 6 Cam                                  | B-070096 |
| 7 Pivot Block                          | B-070097 |
| 8 Pivot Block Bracket                  | A-070465 |
| 9 Pivot Block Pin                      | A-070468 |
| 10 Cam Pin                             | A-070469 |
| 11 Hold Down Lug                       | C-070094 |
| 12 Gasket Retainer Lug                 | B-901546 |
| 13 Upper Hinge                         | B-902370 |
| 14 Eye Bolt                            | A-070098 |
| 15 Safety Latch Assembly               | C-384280 |
| 16 Service Kit                         | 315294   |



# SOLIMAR MANHOLE

## & SPARE PARTS

| ITEM |  | PART # |
|------|--|--------|
| 1    | Solimar Manhole Cover Casting with U-Channel | 3561-P |
| 2    | Solimar Manhole Cover Casting                | 3561   |
| 3    | Gasket, Black SBR                            | 3543   |
| 4    | Gasket White EPDM                            | 3570   |
| 5    | Gasket, Viton                                | 3556   |
| 6    | Retaining Ring                               | 3555   |
| 7    | Safety Washer                                | 3530   |
| 8    | Grease Fitting, 1/8"                         | 3534   |
| 9    | Pivot Block                                  | 3510   |
| 10   | Pivot Bolt                                   | 3516   |
| 11   | Hinge Bolt                                   | 3531   |
| 12   | Clamping Assembly                            | 3528   |
| 13   | Safety Latch                                 | 3550   |
| 14   | Cam Assembly                                 | 3582   |
| 15   | Clamp Bolt                                   | 3575   |
| 16   | Wing Nut Closure, Stainless                  | 3594   |



### SOLIMAR MANHOLE ASSEMBLY COMBINATIONS

| Assembly           | Collar Selection                                   | Gasket Material                         |
|--------------------|--|---|
| <b>39</b> Assembly | <b>0</b> 3/8" x 4" Aluminum, Transverse Mounting   | <b>0</b> SBR, Black                     |
|                    | <b>1</b> 3/8" x 5" Aluminum, Longitudinal Mounting | <b>2</b> EPDM, White                    |
|                    | <b>2</b> 1/4" x 4" Steel, Transverse Mounting      | <b>3</b> Viton, High Temperature, Black |
|                    | <b>3</b> 1/4" x 5" Steel, Longitudinal Mounting    |   |
|                    | <b>4</b> 1/4" x 4" SS, Transverse Mounting         |   |
|                    | <b>5</b> 1/4" x 5" SS, Longitudinal Mounting       |   |

#### ORDERING EXAMPLE:

Assembly desired is 3/8" x 5" Aluminum collar with a viton gasket:

**39** Assembly + **1** 3/8" x 5" Aluminum + **3** Viton

You order **3913**